



RS 5

 **Audi Sport**

The new Audi RS 5 Coupé

Speed isn't everything.

It's a car that powers from 0–100 kmph in just 3.9 seconds – yet there's much more to the new Audi RS 5 Coupé than speed alone. To appreciate what that means, you have to take the wheel for yourself. From the grip of quattro all-wheel drive to the stopping power of the RS brake system, you'll find that every feature is as finely tuned as the new 2.9-litre V6 engine.





The Exterior

A new design, with hints of the past.

The RS 5 Coupé represents the next generation of RS design, inspired by the legendary Audi 90 quattro IMSA GTO: the four-door race car that broke the mould. With its large air inlets, pronounced wheel arches and low, wide shape, it tells the story of our motorsport heritage in every design line.



Performance

Power when you need it most

Beneath the sleek lines of the RS 5 Coupé lies a twin-turbocharged 2.9-litre V6 TFSI engine. Its lightweight design is one of the reasons why this car is lighter than its predecessor – making for enhanced agility and efficiency. Yet the engine still delivers 450PS and 600 Nm of torque, channelled precisely to all four wheels.







The Interior

Race-inspired. Driver-focused.

Subtle yet luxurious, performance-oriented yet supremely comfortable. One look into the cabin of the RS 5 Coupé and the idea of getting behind the wheel becomes even more inviting. Everything, from the fine contours of the RS Sport seats to the sweep of the dashboard, comes in dark, understated tones – which you can accentuate with a range of optional inlays.

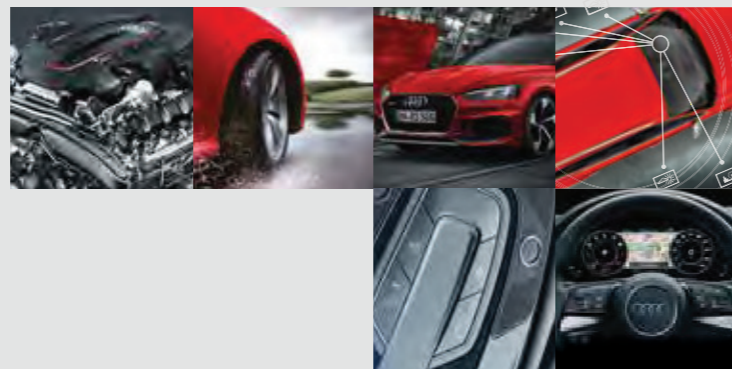


Technology

Intelligent features. Intuitive control.

The RS 5 Coupé puts our latest innovations at your fingertips, including the Audi Virtual Cockpit that comes as standard. True to its name, it acts as the car's nerve centre and updates you with data like current torque and g-forces, while our Smartphone Interface lets you access your mobile with your steering wheel or voice commands. And so that you always have the latest maps available, we've incorporated MMI Navigation Plus, which you can easily control via a central touchpad.

Vorsprung durch Technik



Not just a slogan. A philosophy.

Progress. It's behind everything we do at Audi. It's why, in the new Audi RS 5, we've incorporated new technologies to help you on the road and engines to deliver impressive performance.

The Audi RS 5 is the embodiment of our forward-thinking approach.

Engine

Peak performance.

It's something never-before-seen in any Audi. The 2.9-litre V6 engine in the RS 5 Coupé has been built from the ground up by Audi engineers, specifically to get the most from our performance model.

The results speak for themselves: 450PS, 600 Nm, 0-100 kmph: 3.9 sec.





quattro

**Driving confidence,
whatever the weather.**

Loose gravel. Icy patches. A tight bend in the rain. Conditions on the road are always changing, so quattro changes too. Standard on RS 5 Coupé, it analyses your grip – automatically distributing power between all four wheels to where it's needed most. It's made for the most challenging conditions of all – the ones you encounter every day.

Illuminating features.

The Audi RS 5's Matrix LED headlights produce a light similar in colour to daylight. They also incorporate sensors and an inbuilt camera that detects other road users, as well as ambient light in built-up areas. They then react by dipping individual LEDs to reduce the risk of dazzling other road users, while still fully illuminating the remainder of the road.

Matrix LED lights



Customisable control.

The information you need is always changing, so the Audi Virtual Cockpit changes too. It replaces the traditional dashboard with a high-resolution, 31.2 cms LCD screen, which you can customise by pressing the 'view' button on the multi-function steering wheel.

Choose the 'classic' view, with prominent speedometer and rev counter, or the 'infotainment' view, which brings functions such as the navigation map or media to the fore – with crisp 3D graphics and highly detailed effects.

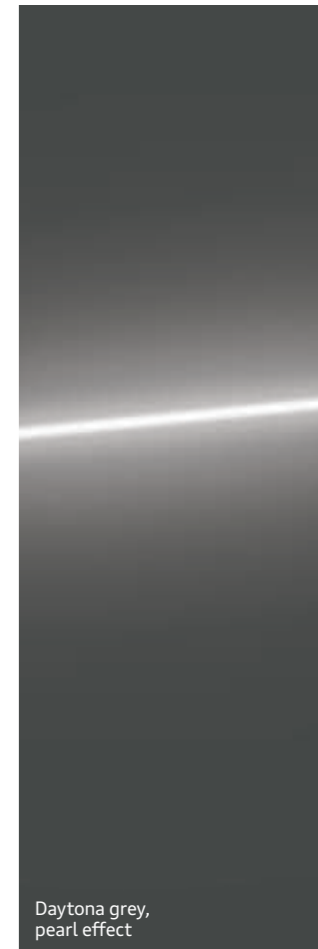
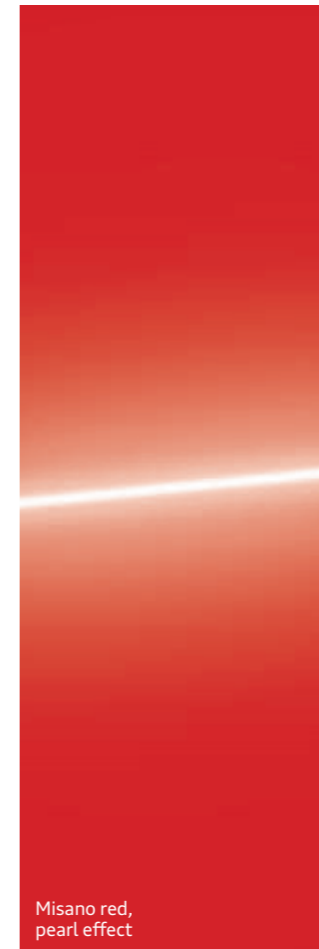
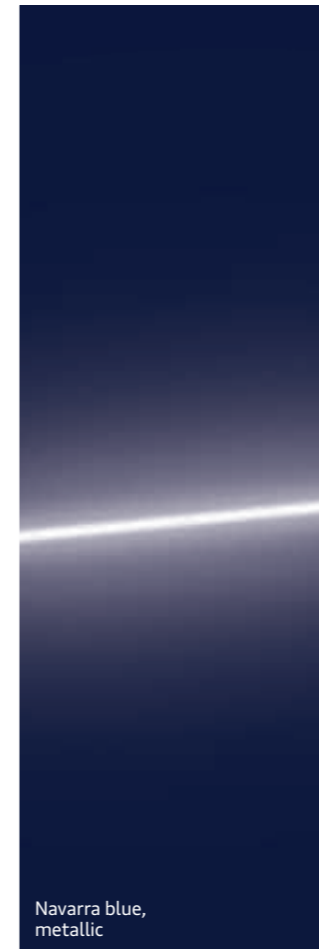
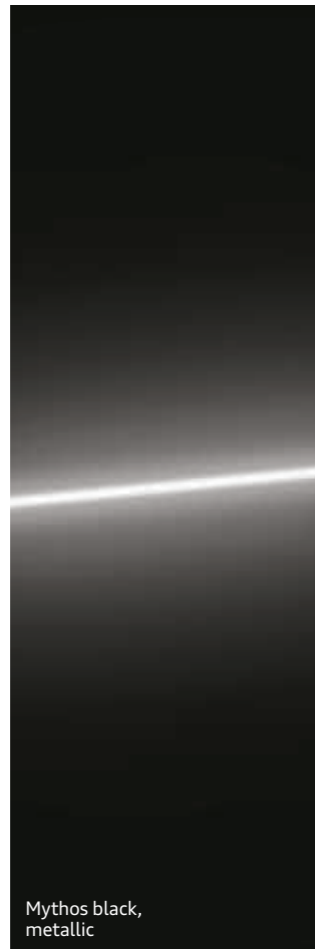
Everything you need to know right in front of you: it's the embodiment of Vorsprung durch Technik.

Virtual Cockpit



Your colour

Express your individuality with a choice of standard colours.





50.8 cms x 9.0J '5-arm-trapezoid' design forged alloy wheels in Anthracite black, diamond cut finish



48.2 cms x 9.0J '10-spoke-star' design forged alloy wheels in Silver



50.8 cms x 9.0J '5-arm-trapezoid' design forged alloy wheels in Silver

Your design

Style your Audi RS 5 with a choice of alloy wheels.

Whatever your taste, there's a set of alloy wheels that will enhance the look of your Audi RS 5. Discover more online using the Audi configurator or by exploring the full price list.



Your upholstery

Sporty or luxurious, you'll find the style and colour of upholstery that fits you perfectly.

You can choose from a combination of colours for your Fine Nappa leather upholstery. Visit the Audi configurator or browse the price list to tailor your Audi RS 5's seating to suit you perfectly.

Main image shows RS 5 with Fine Nappa leather and Crescendo red stitching. For details, please download the pricelist from www.audi.co.uk/pricelist. Image shows German specification. Options are subject to availability and may extend time taken for delivery.

Black upholstery with Rock grey stitching, Fine Nappa leather

Lunar silver upholstery with Rock grey stitching, Fine Nappa leather

Black upholstery with Crescendo red stitching, Fine Nappa leather



Your detail

A choice of inlays to add highlights to your interior.

With fine detailing and specially chosen materials, inlays are the final touch that add a little extra flair to your Audi RS 5. Find your perfect combination in the price list or by using the online Audi configurator.

Main image shows inlays in Carbon design. For details, please download the pricelist from www.audi.co.uk/pricelist
Image shows German specification.
Options are subject to availability and may extend time taken for delivery.

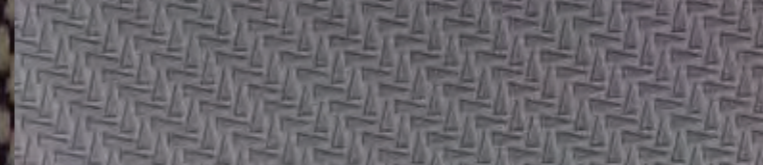
Aluminium race



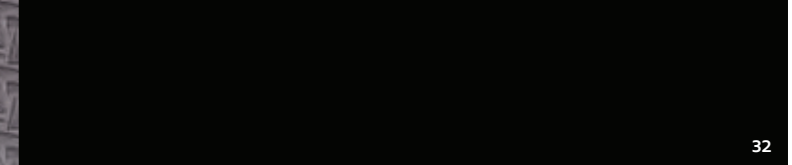
Carbon



Aluminium race, anthracite



Piano finish, black



Carbon Matt Aluminium Styling Pack



Your options

Optional equipment highlights.

Personalise your Audi RS 5 with a range of optional equipment choices. Some options have been packaged together for added convenience whilst others are available individually.

Sport exhaust



Extended LED Interior Lighting Pack





Technical data

Engine type	V6 (Bi-turbo)
Displacement in cc	2894
Max. Power in kW/hp @ rpm	331 / (450 PS) @ 5700-6700
Max. Torque in Nm @ rpm	600 @ 1,900-5,000
Transmission	8-speed tiptronic
Acceleration 0-100 km/h in sec	3.9
Wheel Type/Size	48.26 cms, Alloy wheel / 265/35 R19
Kerb Weight (kgs)	1770
Gross Weight (kgs)	2155
Fuel Tank (l)	58
Fuel efficiency (km/l)	10.28

Audi Vorsprung durch Technik

AUDI INDIA

Division of Volkswagen
Group Sales India Private Limited
Mumbai-India
www.audi.in
Valid from April, 2018

Printed in India

 [audiindia](https://www.facebook.com/audiindia)  [AudiIN](https://twitter.com/AudiIN)  [audiindia](https://www.linkedin.com/company/audiindia)  [AudiIN](https://www.instagram.com/AudiIN)

The model and equipment versions illustrated and described in this brochure and some of the services listed are not available in all countries. Some of the cars illustrated are equipped with optional features for which an extra charge is made. Details concerning the delivery specifications, appearance, performance, dimensions and weights, fuel consumption and running costs of the vehicle were correct to the best of our knowledge at the time of going to press. Deviations from the colours and shapes shown in the illustrations may occur. No liability is accepted for errors and printing errors. The right to introduce modifications is reserved. Not to be reproduced, including in part, without the written approval of AUDI AG.